

tamart[®]

Price List

GBP

September 2025 | RRP | GBP

Central Stool

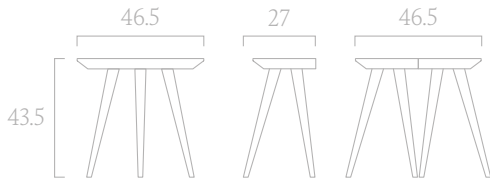
The three-legged Central Stool was originally designed by Tamar de Shalit in 1951 as a student at London’s Central School of Arts and Crafts. The smooth, half-moon, turned wooden form features three tapered legs and crafted mortise and tenon joints. The piece works either as an occasional table or a stool; its straight side can align with the wall or if paired with another stool forms a fully circular side table, which is then secured with hidden magnet fixings.

The Central Stool can be purchased as a single unit (1 stool) or as a pair (2 stools). A pair of stools is more sustainable to produce, thus more economical to purchase; here the two top surfaces are CNC’d from one piece of wood, allowing the wood grain to continue from one to another. The packaging for one stool or a pair of stools is the same size. Fixed inserted felt feet pads are standard.

Dimensions	W46.5×D27×H43.5 cm (single) Ø46.5×H43.5 cm (pair)		
Weight	2.1 kg (single) 4.2 kg (pair)		
Material	Solid FSC timber Natural ash, black stained ash, natural oak		
Finish	Oiled		
CoO Origin	EU		
Package dimensions	W49.5×D36×H48.5 cm		
Packaged weight	3 kg (single) 6 kg (pair)		
Availability	Lead time 4–6 weeks		

Price (single)	SKU	Excl. VAT	Incl. VAT
Black stained ash	TT-CS1-A-B	325 GBP	390 GBP
Natural ash	TT-CS1-A-N	385 GBP	462 GBP
Natural oak	TT-CS1-O-N	415 GBP	500 GBP
Price (pair)	SKU	Excl. VAT	Incl. VAT
Black stained ash	TT-CS2-A-B	579 GBP	695 GBP
Natural ash	TT-CS2-A-N	658 GBP	790 GBP
Natural oak	TT-CS2-O-N	733 GBP	880 GBP

* Retail (RRP) excluding duties, shipping fees and import taxes



[View Central Stool](#)

Clore Floor Lamp

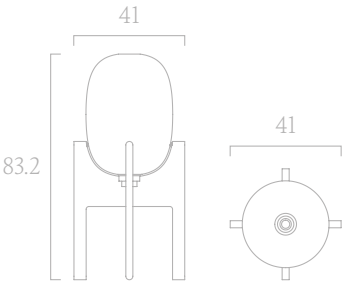
The Clore Floor Lamp, is Tamart’s first lighting design and joins the Clore Collection originally designed by Tamar de Shalit for Sir Charles Clore’s 1960s penthouse. Offering a diffusive illumination, the lamp features an elliptical handblown opaque glass shade, that sits within a solid wooden cradle. The traditionally crafted ovoid shade is made in Czechia by artisans layering opaque white and clear polished glass. The sturdy base is offered in Tamart’s sustainably sourced natural oak, ash and black stained ash, with a black braided cable and a foot dimmer.

With its commanding poised presence, the hybrid ‘furniture-lamp’ offers timeless elegance brought to life for a new generation; the light can be specified for a range of projects from residential and hospitality, to living spaces and breakout areas. Fixed inserted felt feet pads are standard. The product is delivered in 2 boxes.

Dimensions	W41×D41×H83.2 cm Shade: H41 cm×Ø30.5 cm		
Weight	7 kg		
Material	Solid FSC timber Natural ash, black stained ash, natural oak Opaque polished handblown glass		
Finish	Oiled		
Technical	220–240V, UK or European plug, E27 lampholder CE Compliant, Black inline foot dimmer switch with 3 metres of black cotton braided round flex cable		
Lamp source (included)	E27 LED dimmable, warm white (2700 Kelvin) 11.2W/1520lm (=100W old bulb)		
CoO Origin	United Kingdom		
Availability	Lead time 6–8 weeks		

Price	SKU	Excl. VAT	Incl. VAT
Black stained ash	TT-CFL-A-B	1,190 GBP	1,430 GBP
Natural ash	TT-CFL-A-N	1,250 GBP	1,500 GBP
Natural oak	TT-CFL-O-N	1,292 GBP	1,550 GBP

* Retail (RRP) excluding duties, shipping fees and import taxes



[View Clore Floor Lamp](#)

Clore Lounge Chair

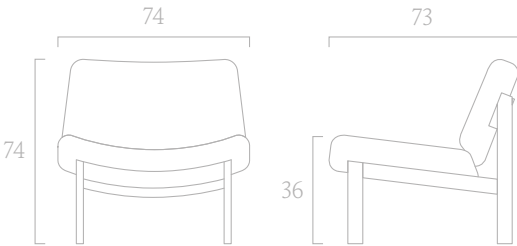
The Clore Lounge Chair references the private penthouse of the late philanthropist and arts patron Sir Charles Clore, whose home Tamar de Shalit designed in 1963. The chair features a gently curved seat and back on a reclined timber frame. The (no-foam) upholstery is made with layers of 100% natural and recycled materials, onto a solid wood stretcher. The compact easy chair is perfect for both residential and public environments. The chair is complemented by the Clore Ottoman, Clore Coffee Table and Clore Floor Lamp in the Clore furniture range.

The chair is offered in a range of fixed covers in natural wool textiles, including Contrast, an exclusively produced black and white woven wool fabric (produced by Bute Fabrics) based on an original fashion textile designed by Tamar de Shalit. Customers Own Material (COM): 2 metres per chair is available subject to the fabric approval by Tamart. The cushioned seat and back can be removed for reupholstery. Fixed inserted felt feet pads are standard.

Dimensions	W74 × D73 × H74 cm Seat height: 36 cm		
Weight	13.6 kg		
Material	Solid FSC timber Natural ash, black stained ash, natural oak		
Finish	Oiled		
Upholstery Inner	Solid timber, natural and recycled materials		
Textiles	Contrast by Tamart – 100% Wool Natural wool fabric ranges *Customers Own Materials (COM)		
CoO Origin	United Kingdom		
Availability	Lead time 6–8 weeks		

Price (black stained ash)	SKU	Excl. VAT	Incl. VAT
Fabric O: Contrast	TT-CLC-A-B-F0	1,850 GBP	2,200 GBP
Fabric I: Boucle or COM*	TT-CLC-A-B-F1	2,190 GBP	2,628 GBP
Price (natural ash)	SKU	Excl. VAT	Incl. VAT
Fabric O: Contrast	TT-CLC-A-N-F0	1,992 GBP	2,390 GBP
Fabric I: Boucle or COM*	TT-CLC-A-N-F1	2,350 GBP	2,820 GBP
Price (natural oak)	SKU	Excl. VAT	Incl. VAT
Fabric O: Contrast	TT-CLC-O-N-F0	2,190 GBP	2,628 GBP
Fabric I: Boucle or COM*	TT-CLC-O-N-F1	2,580 GBP	3,096 GBP

* Retail (RRP) excluding duties, shipping fees and import taxes



[View Clore Lounge Chair](#)

Clore Ottoman

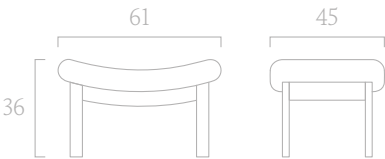
The Clore Ottoman references the private penthouse of the late philanthropist and arts patron Sir Charles Clore, whose home Tamar de Shalit designed in 1963. The ottoman follows the same principles as the Clore Lounge Chair and can be used as a footrest or independently as a stool. The (no-foam) upholstery is made with layers of 100% natural and recycled materials, onto a solid wood stretcher. The low seating option is perfect for both residential and public environments and is part of Tamart’s Clore furniture collection.

Offered in a range of fixed covers in natural wool textiles, including Contrast, an exclusively produced black and white woven wool fabric (produced by Bute Fabrics) based on an original fashion textile designed by Tamar de Shalit. Customers Own Material (COM): 1 metre per seat is available subject to the fabric approval by Tamart. The cushioned seat can be removed for reupholstery. Fixed inserted felt feet pads are standard.

Dimensions	W61 × D45 × H36 cm		
Weight	5.9 kg		
Material	Solid FSC timber Natural ash, black stained ash, natural oak		
Finish	Oiled		
Upholstery Inner	Solid timber, natural and recycled materials		
Textiles	Contrast by Tamart – 100% Wool Natural wool fabric ranges *Customers Own Materials (COM)		
CoO Origin	United Kingdom		
Availability	Lead time 6–8 weeks		

Price (black stained ash)	SKU	Excl. VAT	Incl. VAT
Fabric O: Contrast	TT-CO-A-B- F0	825 GBP	990 GBP
Fabric I: Boucle or COM*	TT-CO-A-B- F1	895 GBP	1,074 GBP
Price (natural ash)	SKU	Excl. VAT	Incl. VAT
Fabric O: Contrast	TT-CO-A-N- F0	916 GBP	1,100 GBP
Fabric I: Boucle or COM*	TT-CO-A-N- F1	950 GBP	1,140 GBP
Price (natural oak)	SKU	Excl. VAT	Incl. VAT
Fabric O: Contrast	TT-CO-O-N- F0	935 GBP	1,122 GBP
Fabric I: Boucle or COM*	TT-CO-O-N- F1	956 GBP	1,195 GBP

* Retail (RRP) excluding duties, shipping fees and import taxes



[View Clore Ottoman](#)

Clore Coffee Table

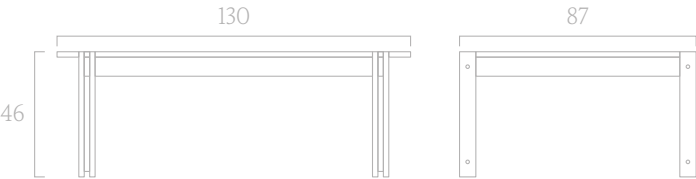
The Clore Coffee Table references the private penthouse of the late philanthropist and arts patron Sir Charles Clore, whose home Tamar de Shalit designed in 1963. The coffee table features solid wood frames that are crafted with pocket dovetail joinery details for tool-free assembly. The tabletop simply rests neatly, without fixings, (on clear protective bumpers) on top of the frame, its weight securing the design. The Clore Coffee Table is available with either extra-clear, toughened glass, stone or wood tops, the latter matching the wood table frames.

The Clore Coffee Table Frame can be purchased as a Frame Only item, allowing the customer to locally source their own tops (reducing carbon footprint). The Clore Coffee Table Frame arrives flat packed in 4 pieces and simply slots together with the gentle aid of a G-clamp. Top specifications can be provided on request. N.B. Glass tops are supplied to the UK only. Fixed inserted felt feet pads are standard.

Dimensions	Frame only: L130×D87×H46 cm Table with Glass Top: L130×D75×H1.2 cm Table with Wood Top: L130×D75×H3.3 cm
Weight	Frame only: 7.65 kg Glass top: 30 kg
Material	Solid FSC timber Natural ash, black stained ash, natural oak Top options: glass, stone, wood
Finish	Timber: oiled Glass top: extra clear, polished
CoO Origin	Frame: EU Tops: Wood EU Glass UK
Packaging dimensions	Frame only: W130×D75×H7.8 cm
Packaged weight	Frame only: 10 kg
Availability	Lead time 6–8 weeks

Price: Frame only	SKU	Excl. VAT	Incl. VAT
Black stained ash	TT-CCTF-L-A-B	575 GBP	690 GBP
Natural ash	TT-CCTF-L-A-N	695 GBP	834 GBP
Natural oak	TT-CCTF-L-O-N	790 GBP	950 GBP
Price: Table with Glass Top	SKU	Excl. VAT	Incl. VAT
Black stained ash	TT-CCT-L-A-B-G	1,100 GBP	1,320 GBP
Natural ash	TT-CCT-L-A-N-G	1,250 GBP	1,500 GBP
Natural oak	TT-CCT-L-O-N-G	1,350 GBP	1,620 GBP
Price: Table with Wood Top	SKU	Excl. VAT	Incl. VAT
Black stained ash	TT-CCT-L-A-B-W	1,450 GBP	1,740 GBP
Natural ash	TT-CCT-L-A-N-W	1,575 GBP	1,890 GBP
Natural oak	TT-CCT-L-O-N-W	1,950 GBP	2,250 GBP

* Retail (RRP) excluding duties, shipping fees and import taxes



[View Clore Coffee Table](#)

Clore Dining Table

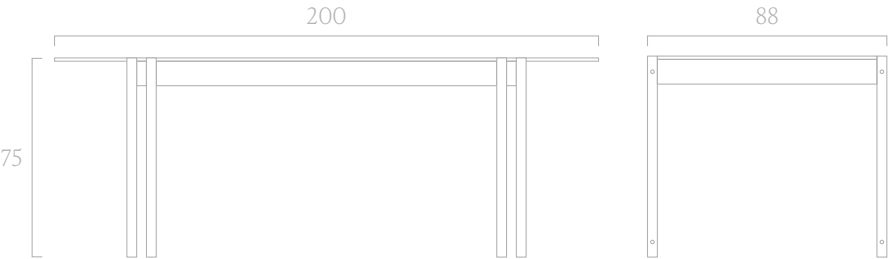
The Clore Dining Table joins the Clore Coffee Tables as part of the Clore Collection, referencing Sir Charles Clore’s 1960s penthouse designed by Tamar de Shalit. Mirroring the form of its counterpart, the new reimaged piece showcases solid wood framing and is available with your choice of extra-clear, toughened glass, stone or wooden tops matching the solid timber frames. The tabletop simply rests neatly, without fixings, (on clear protective bumpers) on top of the frame, its weight securing the design.

The Clore Dining Table Frame can be purchased as a Frame Only item, allowing the customer to locally source their own tops (reducing carbon footprint). The Clore Dining Table Frame arrives flat-packed in 4 pieces and slots together in minutes with 4 fixings. Top specifications can be provided on request. N.B. Glass tops are supplied to the UK only. Fixed inserted felt feet pads are standard.

Dimensions	Frame only: L200×D88×H75 cm Table with Glass Top: L200×D80×H1.2 cm Table with Wood Top: L200×D80×H3.3 cm
Weight	Frame only: 13.6 kg Glass top: 48 kg
Material	Solid FSC timber Natural ash, black stained ash, natural oak Top options: glass, stone, wood
Finish	Timber: oiled Glass top: extra clear, polished
CoO Origin	Frame: EU Tops: Wood EU Glass UK
Packaged dimensions	Frame only: W135.4×D95.6×H12.1 cm
Packaged weight	Frame only: 15 kg
Availability	Lead time 6–8 weeks

Price: Frame only	SKU	Excl. VAT	Incl. VAT
Black stained ash	TT-CDTF-A-B	895 GBP	1,074 GBP
Natural ash	TT-CDTF-A-N	960 GBP	1,152 GBP
Natural oak	TT-CDTF-O-N	1,100 GBP	1,320 GBP
Price: Table with Glass Top	SKU	Excl. VAT	Incl. VAT
Black stained ash	TT-CDT-A-B-G	1,950 GBP	2,340 GBP
Natural ash	TT-CDT-A-N-G	2,190 GBP	2,628 GBP
Natural oak	TT-CDT-O-N-G	2,450 GBP	2,940 GBP
Price: Table with Wood Top	SKU	Excl. VAT	Incl. VAT
Black stained ash	TT-CDT-A-B-W	2,270 GBP	2,725 GBP
Natural ash	TT-CDT-A-N-W	2,450 GBP	2,940 GBP
Natural oak	TT-CDT-O-N-W	2,900 GBP	3,480 GBP

* Retail (RRP) excluding duties, shipping fees and import taxes



[View Clore Dining Table](#)

Highgate Chair

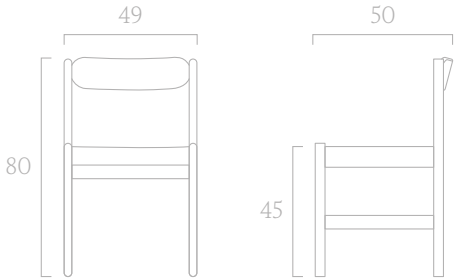
The new Highgate Chair takes its design cues from essential modernist principles with its simple rectangular construction and strict geometric appearance inspired by designs from the 1960s in Tamart’s archive. The contemporary pill-shaped, comfortably angled back and bullnose curved stile tops and feet soften the appearance while the fine, naturally dyed leather sling-style seat gives the chair a lightness. The light padded leather seat, with contrast stitching is tension-fitted allowing the comfort to be adjusted and refreshed.

The perfect companion to Tamart’s Clore Dining Table as a meeting or dining chair. The versatile chair is suitable as a stand-alone seat for community meetings and ecclesiastical areas, or residential and hospitality dining. The timber frame is offered in sustainably sourced natural oak, natural ash and black stained ash with a choice of matching or contrasting colours of natural vegetable-tanned leather sling seats. Fixed inserted felt feet pads are standard.

Dimensions	W49×D50×H80 cm Seat height: 45 cm
Weight	4.81 kg
Material	Solid FSC timber Natural ash, black stained ash, natural oak
Finish	Oiled
Seat	Natural vegetable tanned leather and natural canvas
Colours	Chestnut, black, natural
CoO Origin	EU
Package dimensions	W63.4×D53.8×H86 cm
Packaged weight	6 kg (one chair) 11 kg (two chairs)
Availability	Lead time 6–8 weeks

Price	SKU	Excl. VAT	Incl. VAT
Natural ash, Black	TT-HC-A-N-LB	960 GBP	1,200 GBP
Natural ash, Natural	TT-HC-A-N-LN	960 GBP	1,200 GBP
Natural ash, Chestnut	TT-HC-A-N-LC	960 GBP	1,200 GBP
Black stained ash, Black	TT-HC-A-B-LB	880 GBP	995 GBP
Black stained ash, Natural	TT-HC-A-B-LN	880 GBP	995 GBP
Black stained ash, Chestnut	TT-HC-A-B-LC	880 GBP	995 GBP
Natural oak, Black	TT-HC-O-N-LB	1,160 GBP	1,400 GBP
Natural oak, Natural	TT-HC-O-N-LN	1,160 GBP	1,400 GBP
Natural oak, Chestnut	TT-HC-O-N-LC	1,160 GBP	1,400 GBP

* Retail (RRP) excluding duties, shipping fees and import taxes



[View Highgate Chair](#)

Highgate Chair with Arms

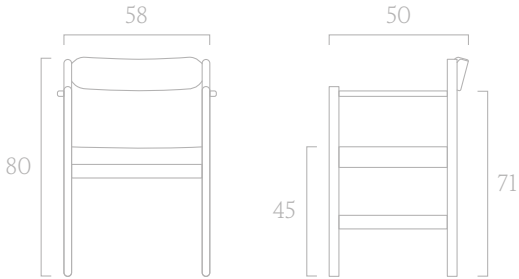
The new Highgate Chair with Arms, the more generous companion to the Highgate Chair, takes its design cues from essential modernist principles with its simple rectangular construction and strict geometric appearance. The contemporary pill-shaped, comfortably angled back and bullnose curved stile tops and feet soften the appearance, while the fine, naturally dyed leather sling-style seat gives the chair a lightness. The light padded leather seat, with contrast stitching is tension-fitted allowing the comfort to be adjusted and refreshed.

The arm height fits perfectly under Tamart’s Clore Dining Table. The versatile chair is suitable as a stand-alone seat for meeting and reception areas or residential and hospitality dining. The timber frame is offered in sustainably sourced natural oak, natural ash and black stained ash with a choice of matching or contrasting colours of natural vegetable-tanned leather sling seats. Fixed inserted felt feet pads are standard.

Dimensions	W58×D50×H80 cm Seat height: 45 cm Arm height: 71 cm
Weight	5.85 kg
Material	Solid FSC timber Natural ash, black stained ash, natural oak
Finish	Oiled
Seat	Natural vegetable tanned leather and natural canvas
Colours	Chestnut, black, natural
CoO Origin	EU
Package dimensions	W63.4×D53.8×H86 cm
Packaged weight	7 kg
Availability	Lead time 6–8 weeks

Price	SKU	Excl. VAT	Incl. VAT
Natural ash, Black leather	TT-HCA-A-N-LB	1,190 GBP	1,425 GBP
Natural ash, Natural	TT-HCA-A-N-LN	1,190 GBP	1,425 GBP
Natural ash, Chestnut	TT-HCA-A-N-LC	1,190 GBP	1,425 GBP
Black stained ash, Black	TT-HCA-A-B-LB	1,050 GBP	1,260 GBP
Black stained ash, Natural	TT-HCA-A-B-LN	1,050 GBP	1,260 GBP
Black stained ash, Chestnut	TT-HCA-A-B-LC	1,050 GBP	1,260 GBP
Natural oak, Black	TT-HCA-O-N-LB	1,292 GBP	1,550 GBP
Natural oak, Natural	TT-HCA-O-N-LN	1,292 GBP	1,550 GBP
Natural oak, Chestnut	TT-HCA-O-N-LC	1,292 GBP	1,550 GBP

* Retail (RRP) excluding duties, shipping fees and import taxes



[View Highgate Chair with Arms](#)

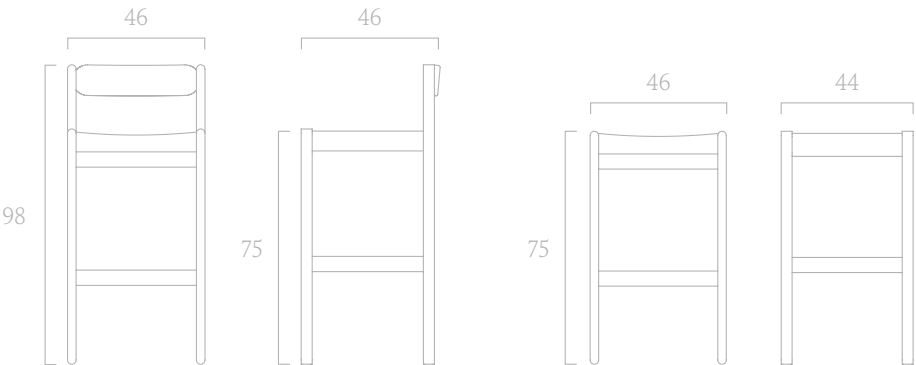
Highgate Bar Stools

The Highgate Bar Stool is a new addition to Tamart’s seating range, drawing design cues from modernist principles that define the Highgate collection. At 75 cm height, this elegant, sturdy piece is offered in two models: one featuring the signature pill-shaped lumbar backrest, and a spare, elemental backless design. The padded leather sling-style seat utilises ‘Tamart innovation’ tension-fitting, allowing comfort to be adjusted and reset as needed. An ideal companion to any hotel bar.

Dimensions	Seat height 75 cm With backrest W46×D46×H98 cm No backrest W46×D44×75 cm
Material	Solid FSC timber Natural ash, natural oak, black stained ash
Finish	Oiled
Seat	Natural vegetable tanned leather and natural canvas
Colours	Chestnut, black, natural
CoO Origin	EU
Package dimensions	W50×D50×H100 cm
Availability	2026 Feb (TBA), N.B Guide Prices only

Frame Seat			
Price, with backrest	SKU	Excl. VAT	Incl. VAT
Natural ash, Black	TT-HBS-B-A-N-LB	960 GBP	1,200 GBP
Natural ash, Natural	TT-HBS-B-A-N-LN	960 GBP	1,200 GBP
Natural ash, Chestnut	TT-HBS-B-A-N-LC	960 GBP	1,200 GBP
Black stained ash, Black	TT-HBS-B-A-B-LB	880 GBP	995 GBP
Black stained ash, Natural	TT-HBS-B-A-B-LN	880 GBP	995 GBP
Black stained ash, Chestnut	TT-HBS-B-A-B-LC	880 GBP	995 GBP
Natural oak, Black	TT-HBS-B-O-N-LB	1,160 GBP	1,400 GBP
Natural oak, Natural	TT-HBS-B-O-N-LN	1,160 GBP	1,400 GBP
Natural oak, Chestnut	TT-HBS-B-O-N-LC	1,160 GBP	1,400 GBP
Price, no backrest	SKU	Excl. VAT	Incl. VAT
Natural ash, Black	TT-HBS-A-N-LB	890 GBP	1,068 GBP
Natural ash, Natural	TT-HBS-A-N-LN	890 GBP	1,068 GBP
Natural ash, Chestnut	TT-HBS-A-N-LC	890 GBP	1,068 GBP
Black stained ash, Black	TT-HBS-A-B-LB	790 GBP	948 GBP
Black stained ash, Natural	TT-HBS-A-B-LN	790 GBP	948 GBP
Black stained ash, Chestnut	TT-HBS-A-B-LC	790 GBP	948 GBP
Natural oak, Black	TT-HBS-O-N-LB	990 GBP	1,188 GBP
Natural oak, Natural	TT-HBS-O-N-LN	990 GBP	1,188 GBP
Natural oak, Chestnut	TT-HBS-O-N-LC	990 GBP	1,188 GBP

* Retail (RRP) excluding duties, shipping fees and import taxes



[View Highgate Bar Stools](#)

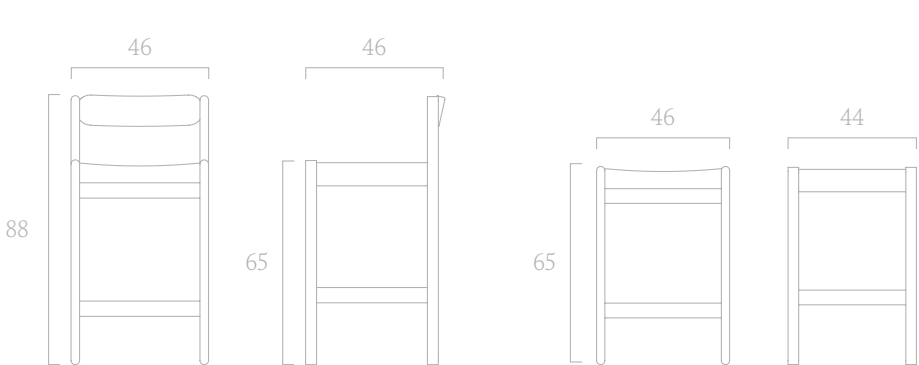
Highgate Counter Stools

Complementing the Highgate collection, the Counter Stool brings refined modernist design to counter-height spaces. At 65 cm, this versatile piece mirrors the principles of its taller counterpart. Available in two models – with the characteristic pill-shaped lumbar support or in a clean, backless configuration – each features the signature padded leather sling seat with ‘Tamart innovation’ tension-fitting for adjustable comfort. Perfect for kitchen islands and counter dining.

Dimensions	Seat height 65 cm With backrest W46×D46×H88 cm No backrest W46×D44×65 cm
Material	Solid FSC timber Natural ash, natural oak, black stained ash
Finish	Oiled
Seat	Natural vegetable tanned leather and natural canvas
Colours	Chestnut, black, natural
CoO Origin	EU
Package dimensions	W50×D50×H90 cm
Availability	2026 Feb (TBA), N.B Guide Prices only

Frame Seat			
Price, with backrest	SKU	Excl. VAT	Incl. VAT
Natural ash, Black	TT-HCS-B-A-N-LB	960 GBP	1,200 GBP
Natural ash, Natural	TT-HCS-B-A-N-LN	960 GBP	1,200 GBP
Natural ash, Chestnut	TT-HCS-B-A-N-LC	960 GBP	1,200 GBP
Black stained ash, Black	TT-HCS-B-A-B-LB	880 GBP	995 GBP
Black stained ash, Natural	TT-HCS-B-A-B-LN	880 GBP	995 GBP
Black stained ash, Chestnut	TT-HCS-B-A-B-LC	880 GBP	995 GBP
Natural oak, Black	TT-HCS-B-O-N-LB	1,160 GBP	1,400 GBP
Natural oak, Natural	TT-HCS-B-O-N-LN	1,160 GBP	1,400 GBP
Natural oak, Chestnut	TT-HCS-B-O-N-LC	1,160 GBP	1,400 GBP
Price, no backrest	SKU	Excl. VAT	Incl. VAT
Natural ash, Black	TT-HCS-A-N-LB	890 GBP	1,068 GBP
Natural ash, Natural	TT-HCS-A-N-LN	890 GBP	1,068 GBP
Natural ash, Chestnut	TT-HCS-A-N-LC	890 GBP	1,068 GBP
Black stained ash, Black	TT-HCS-A-B-LB	790 GBP	948 GBP
Black stained ash, Natural	TT-HCS-A-B-LN	790 GBP	948 GBP
Black stained ash, Chestnut	TT-HCS-A-B-LC	790 GBP	948 GBP
Natural oak, Black	TT-HCS-O-N-LB	990 GBP	1,188 GBP
Natural oak, Natural	TT-HCS-O-N-LN	990 GBP	1,188 GBP
Natural oak, Chestnut	TT-HCS-O-N-LC	990 GBP	1,188 GBP

* Retail (RRP) excluding duties, shipping fees and import taxes



[View Highgate Counter Stools](#)

Red Rock Club Chair

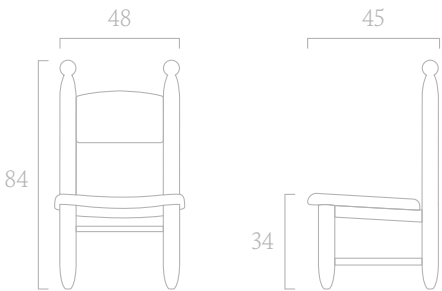
The Red Rock Club Chair originates from a furniture series custom-created for the famous 1970s Red Rock Hotel and Club, designed by Arthur Goldreich and Tamar de Shalit. The chair offers a compact footprint and low seating, giving it a naive and playful feel. Its stiles are topped with tactile carved spheres, inviting people to hold on while standing behind. The chair features solidly proportioned legs which taper at the feet and feel pleasingly substantial.

Offered in a range of fixed covers in fabric or leather, including Contrast, an exclusive Tamart monochrome woven wool fabric (produced by Bute Fabrics) based on an original 1980s textile designed by Tamar de Shalit. Customers own materials (COM) are subject to approval by Tamart. The cushioned seat and back can be removed for reupholstery.

Dimensions	W48×D45×H84 cm Seat height 34 cm
Weight	8.9 kg
Material	Solid FSC timber Natural ash, black stained ash, natural oak
Finish	Oiled
Textiles	Contrast by Tamart – 100% Wool Natural wool fabric and leather ranges *Customers Own Materials (COM)
CoO Origin	United Kingdom
Availability	Deliveries from May 2025 Lead time 6–8 weeks

Price (black stained ash)	SKU	Excl. VAT	Incl. VAT
Fabric O: Contrast	TT-RRCC-A-B-F0	1,100 GBP	1,320 GBP
Fabric I: Boucle or COM*	TT-RRCC-A-B-F1	1,200 GBP	1,440 GBP
Leather	TT-RRCC-A-B-L	1,300 GBP	1,560 GBP
Price (natural ash)	SKU	Excl. VAT	Incl. VAT
Fabric O: Contrast	TT-RRCC-A-N-F0	1,200GBP	1,440 GBP
Fabric I: Boucle or COM*	TT-RRCC-A-N-F1	1,350 GBP	1,620 GBP
Leather	TT-RRCC-A-N-L	1,450 GBP	1,740 GBP
Price (natural oak)	SKU	Excl. VAT	Incl. VAT
Fabric O: Contrast	TT-RRCC-O-N-F0	1,350 GBP	1,620 GBP
Fabric I: Boucle or COM*	TT-RRCC-O-N-F1	1,490 GBP	1,788 GBP
Leather	TT-RRCC-O-N-L	1,580 GBP	1,896 GBP

*Retail (RRP) excluding duties, shipping fees and import taxes



[View Red Rock Club Chair](#)

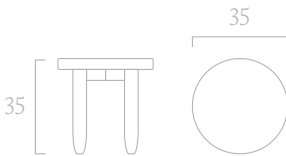
Red Rock Club Stool

The Red Rock Club Stool, which also works as a side table, originates from a furniture series custom-created for the famous 1970s Red Rock Hotel and Club, designed by Arthur Goldreich and Tamar de Shalit. This piece follows the same principles as the Red Rock Club Chair with its solidly proportioned legs which taper at the feet. The stool is crafted from Tamart’s sustainably sourced timbers – natural oak, ash and black stained ash, with an oiled finish. The furniture arrives assembled as one piece. Fixed inserted felt feet pads are standard.

Dimensions	Ø 35 cm×H35 cm
Weight	4.1 kg
Material	Solid FSC timber Natural ash, black stained ash, natural oak
Finish	Oiled
CoO Origin	EU
Availability	Deliveries from May 2025 Lead time 6–8 weeks

Price	SKU	Excl. VAT	Incl. VAT
Black stained ash	TT-RRCS-A-B	350 GBP	420 GBP
Natural ash	TT-RRCS-A-N	385 GBP	462 GBP
Natural oak	TT-RRCS-O-N	420 GBP	504 GBP

*Retail (RRP) excluding duties, shipping fees and import taxes



[View Red Rock Club Stool](#)

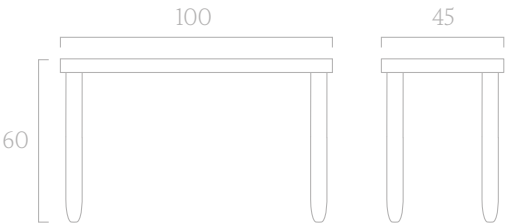
Red Rock Club Lounge Table

The Red Rock Club Lounge Table originates from a furniture series custom-created for the famous 1970s Red Rock Hotel and Club, designed by Arthur Goldreich and Tamar de Shalit. This piece follows the same principles as the Red Rock Club Chair and Stool with the distinctive broad turned legs and curved tapered feet; the table has a compact footprint and has a table height of 60 cm. The stool is crafted from European sustainably sourced timbers – natural oak, ash and black stained ash – with an oiled finish. Fixed inserted felt feet pads are standard. Its refined construction means that the legs simply screw on, making it easy to transport.

Dimensions	L100×D45×H60 cm		
Weight	16.4 kg		
Material	Solid FSC timber Natural ash, natural oak, black stained ash		
Finish	Oiled		
CoO Origin	EU		
Availability	Deliveries from May 2025 Lead time 6–8 weeks		

Price	SKU	Excl. VAT	Incl. VAT
Black stained ash	TT-RRCLT-A-B	580 GBP	695 GBP
Natural ash	TT-RRCLT-A-N	622 GBP	795 GBP
Natural oak	TT-RRCLT-O-N	745 GBP	895 GBP

* Retail (RRP) excluding duties, shipping fees and import taxes



[View Red Rock Club Lounge Table](#)

Colours and Materials

All Tamart products are made in the UK and Europe. Tamart takes great care to use the finest quality or recycled materials and employs sustainable production techniques to enhance the lifespan of each piece of furniture. All Tamart products are repairable and recyclable. Read our sustainability statement [here](#).

Wood

All Tamart wooden products are crafted by producers that use European FSC timbers, and an oiled (plant-based) finish, and are available in black-stained ash, or natural ash and oak. With 40% less waste, the black stained ash is the most sustainable timber.

Glass | Clore Tables

12mm Toughened, extra clear PAR. Glass tops are only supplied in the UK, please contact us for outside UK deliveries.

Glass | Clore Lamp Shade

Handblown opaque glass crafted in Czechia by artisans using metals moulds and by layering opaque white and clear polished glass.

Leather

The natural vegetable-tanned leathers are sourced in Europe and are available in black, natural or chestnut colours.

Upholstery

Layers of recycled and natural pure fibres are built by hand over solid timber frames and stretchers.

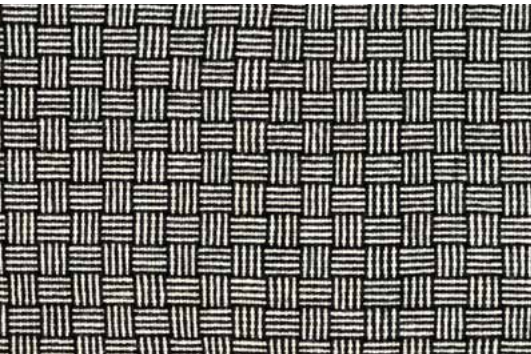
Textiles

Each upholstered piece is offered in a range of natural wool textiles from the British textile producers Mourne Textiles (fabric 02 Mist, Pebble, fabric 03 Cloughmore) and Bute Fabrics (fabric 01 Teddy), as well as an exclusive Tamart-designed fabric called Contrast. Customers Own Materials (COM) is also offered.

Contrast

A 100% pure new wool tweed, is exclusively produced for Tamart’s debut product collection. Tamart has worked closely with Bute Fabrics to develop the Bute Tweed range, to create Contrast – a bespoke black and white woven fabric based on an original fashion textile designed by Tamar de Shalit.

Contrast by Tamart



100% Pure new wool tweed

Wood



Black Stained Ash



Natural Ash



Natural Oak

Tops



Stone



Glass

Leather



Black

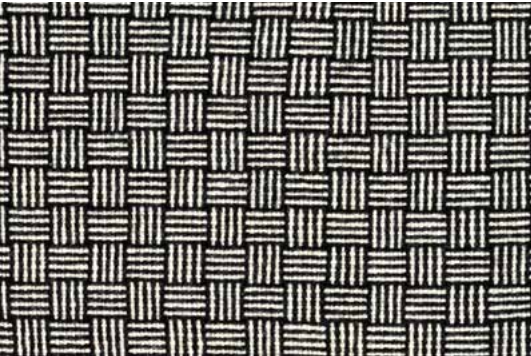


Natural



Chestnut

Fabrics



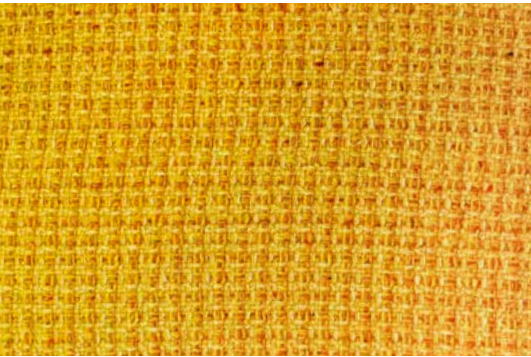
Contrast



01




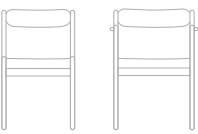

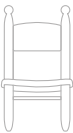
02



03

Materials Chart

	Wood	Top	Leather	Fabric
Central Stool	<div><div></div><div></div></div>	<div><div></div></div>		
	<div><div></div></div>			
Clore Floor Lamp	<div><div></div><div></div></div>	<div><div></div></div>	<div><div></div></div>	
	<div><div></div></div>			
Clore Lounge Chair	<div><div></div><div></div></div>	<div><div></div></div>		<div><div></div><div></div></div>
	<div><div></div></div>			<div><div></div><div></div></div>
Clore Ottoman	<div><div></div><div></div></div>	<div><div></div></div>		<div><div></div><div></div></div>
	<div><div></div></div>			<div><div></div><div></div></div>
Clore Coffee Table	<div><div></div><div></div></div>	<div><div></div><div></div></div>	<div><div></div><div></div></div>	<div><div></div></div>
	<div><div></div></div>			

	Wood	Top	Leather	Fabric
Clore Dining Table	<div><div></div><div></div></div>	<div><div></div><div></div></div>		
	<div><div></div></div>			
Highgate Chairs	<div><div></div><div></div></div>	<div><div></div></div>	<div><div></div><div></div></div>	
	<div><div></div></div>		<div><div></div></div>	
Highgate High Stools	<div><div></div><div></div></div>	<div><div></div></div>	<div><div></div><div></div></div>	
	<div><div></div></div>		<div><div></div></div>	
Red Rock Club Chair	<div><div></div><div></div></div>	<div><div></div></div>	<div><div></div><div></div></div>	<div><div></div><div></div></div>
			<div><div></div></div>	<div><div></div><div></div></div>

Red Rock Lounge Stool Table	<div><div></div><div></div></div>	<div><div></div></div>		
	<div><div></div></div>			

Collection

	Material	GBP Excl. VAT	GBP Incl. VAT
Central Stool (single)	Black stained ash	325	390
	Natural ash	385	462
	Natural oak	415	500
Central Stool (pair)	Black stained ash	579	695
	Natural ash	658	790
	Natural oak	733	880
Clore Floor Lamp	Black stained ash	1,190	1,430
	Natural ash	1,250	1,500
	Natural oak	1,292	1,550
Clore Lounge Chair	Black stained ash (Fabric O)	1,850	2,200
	Black stained ash (Fabric 1)	2,190	2,628
	Natural ash (Fabric O)	1,992	2,390
	Natural ash (Fabric 1)	2,350	2,820
	Natural oak (Fabric O)	2,190	2,628
	Natural oak (Fabric 1)	2,580	3,096
Clore Ottoman	Black stained ash (Fabric O)	825	990
	Black stained ash (Fabric 1)	895	1,074
	Natural ash (Fabric O)	916	1,100
	Natural ash (Fabric 1)	950	1,140
	Natural oak (Fabric O)	935	1,122
	Natural oak (Fabric 1)	956	1,195
Clore Coffee Table (frame only)	Black stained ash	575	690
	Natural ash	695	834
	Natural oak	790	950
Clore Coffee Table (with glass top)	Black stained ash	1,100	1,320
	Natural ash	1,250	1,500
	Natural oak	1,350	1,620
Clore Coffee Table (with wood top)	Black stained ash	1,450	1,740
	Natural ash	1,575	1,890
	Natural oak	1,950	2,250
Clore Dining Table (frame only)	Black stained ash	895	1,074
	Natural ash	960	1,152
	Natural oak	1,100	1,320
Clore Dining Table (with glass top)	Black stained ash	1,950	2,340
	Natural ash	2,190	2,628
	Natural oak	2,450	2,940
Clore Dining Table (with wood top)	Black stained ash	2,270	2,725
	Natural ash	2,450	2,940
	Natural oak	2,900	3,480

	Material	GBP Excl. VAT	GBP Incl. VAT
Highgate Chair	Black stained ash	880	995
	Natural ash	960	1,200
	Natural oak	1,160	1,400
Highgate Chair with Arms	Black stained ash	1,050	1,260
	Natural ash	1,190	1,425
	Natural oak	1,292	1,550
Highgate Bar Stool (with backrest)	Black stained ash	1,050	1,260
	Natural ash	1,190	1,425
	Natural oak	1,292	1,550
Highgate Bar Stool (no backrest)	Black stained ash	790	948
	Natural ash	890	1,068
	Natural oak	990	1,188
Highgate Counter Stool (with backrest)	Black stained ash	1,050	1,260
	Natural ash	1,190	1,425
	Natural oak	1,292	1,550
Highgate Counter Stool (no backrest)	Black stained ash	790	948
	Natural ash	890	1,068
	Natural oak	990	1,188
Red Rock Club Chair	Black stained ash (Fabric O)	1,100	1,320
	Black stained ash (Fabric 1)	1,200	1,440
	Black stained ash (Leather)	1,300	1,560
	Natural ash (Fabric O)	1,200	1,440
	Natural ash (Fabric 1)	1,350	1,620
	Natural ash (Leather)	1,450	1,740
	Natural oak (Fabric O)	1,350	1,620
	Natural oak (Fabric 1)	1,490	1,788
	Natural oak (Leather)	1,580	1,896
Red Rock Club Stool	Black stained ash	350	420
	Natural ash	385	462
	Natural oak	420	504
Red Rock Lounge Table	Black stained ash	580	695
	Natural ash	622	795
	Natural oak	745	895

Contacts

Tamart
The Wax Building
4 Garden Walk
London EC2A 3EQ
United Kingdom

tamartdesign.com

+44(0)20 7870 8201
enquiries@tamartdesign.com
Instagram @tamart.designs
LinkedIn @tamartdesigns

Showroom by appointment

[Our Sustainability Statement](#)

Notes. Prices shown are List and Retail (RRP) excluding and including VAT, they also exclude shipping, duties or other import/tax fees. Tamart reserves the right to carry out price and description modifications of products when necessary and without prior notice. For full Terms and Conditions email enquiries@tamartdesign.com

Tamart Design Limited
VAT No. GB454722390
EORI No. GB454722390000
Registered in England No.14628487

© 2025 Tamart Design Limited